

# DIVISION OF FORESTRY TOK AREA

## 5 YEAR SCHEDULE OF TIMBER SALES

**Fiscal Year**

**2019-2023**

**FINAL**



Submitted By:

**Nick Carter**

Tok/Copper River Area Forester

Prepared By:

**Kevin Meany**

Fairbanks/Delta Resource Forester

Tok Area Forestry  
Department of Natural Resources  
State of Alaska  
P.O Box 10  
Tok Alaska 99780  
Phone: (907) 883-1400  
Fax: (907) 883-5135

**DEPARTMENT OF NATURAL RESOURCES  
DIVISION OF FORESTRY  
TOK AREA FORESTRY**

**Five-Year Schedule of Timber Sales (FYSTS)  
Fiscal Year 2019 to 2023**

This Five-Year Schedule of Timber Sales (FYSTS) provides information about planned and / or proposed timber sales and associated road construction in the Tok Management Area. This schedule is planned to support the local forest industry along with providing for the local demand of woody biomass and fuelwood. **The Division of Forestry is resubmitting this Draft version to reflect significant changes to the FYSTS made following ground reconnaissance of several of the sale areas.**

*Purpose of the Five- Year Schedule of Timber Sales*

This schedule is a scoping document that provides a time line that identifies timber sales, their volumes, and their locations. It must contain sufficient information to provide the public and the forest products industry with a basis to comment on proposed sale offerings.

The timber sales included in this schedule are part of a management policy that ensures a sustained yield of renewable forest resources and the integrated use of forest lands by a myriad of users, as guided by Alaska State statutes and regulations, the Tanana Valley State Forest Management Plan, and the State of Alaska DNR Eastern Tanana Area Plan. Sales are located across a wide area of the forest land base, they vary in size, species composition, and developmental requirements. Emergency salvage sales, market conditions, sale preparation challenges, logistical constraints, funding and other considerations may cause some proposed sales to be dropped or moved between years.

Generally, the Division of Forestry may not offer a timber sale unless it has appeared on at least one of the two Five-Year Schedules immediately preceding the sale. Sales are exempt from this requirement if they are: 160 acres or less; will cause substantial losses of economic value on salvage sales; or emergency sales in areas with fire; allow for the spread of damaging insect, or other natural threats; or preclude a local economic enterprise or forest management project that is in the state's best interest. (References: AS 38.05.113, AS 38.05.117, and 11 AAC 71.010)

*Timber Sale Land Base*

The forest management activities identified in this Five-Year Schedule of Timber Sales 2019-2023 are consistent with the Eastern Tanana Area Plan (ETAP) and the Tanana Valley State Forest (TVSF) Management Plan. The TVSF plan cover approximately 549,000 acres of forest designated lands in the Tok Area and the ETAP covers hundreds of thousands of acres in the Tok Area. Large tracks of forest are in forestry designation, and can have multiple designations such as wildlife habitat, recreation, and settlement. These sales have the potential for multiple project goals such as timber production, wildlife habitat enhancement, and development of settlement lands.

## ***Management Intent of the DOF Timber Sale Program***

The Division of Forestry's management intent for the Tok Area is to provide raw material available for harvest to the local/regional timber businesses of all sizes and Alaska's Eastern Interior communities for personal use. This FYSTS is designed to meet the current and anticipated demands for timber and fuel in the Tok Area for the next five years.

Forest access roads will be constructed to meet DOF Road and Bridge Standards, the TVSF Management Plan, the ETAP and Best Management Practices for the Alaska Forest Resources and Practices Act. Road construction is divided into two main categories winter road only and all-season road. Tok Forestry will work closely with ADF&G Biologists, the Upper Tanana Forty Mile Fish and Game Advisory Committee, and private land owners on creating road access that meets the needs of multiple user groups. Control of access using gates and other means has been largely unsuccessful in the past, thus future road development will focus on quality design and location. This will improve all season road conditions, cost of maintenance, and provide for year-round access. DOF will address access development and roads in detail with each of the Best Interest Findings and Forest Land Use Plans (FLUP) for every proposed timber sale submitted for agency and public review.

Tok Area Forestry is working closely with the ADF&G biologist on timber harvest activities and wildlife habitat enhancement projects to minimize impacts of road construction and timber harvest on fish and wildlife resources. Forestry will look at every timber harvest opportunity to maximize the habitat benefit for wildlife where feasible. Projects with dual goals of timber harvest and habitat enhancement are included in this plan. Tok Forestry is also working with biologists with Ruffed Grouse Society, Founding 40, The Alaska Moose Federation, and other groups on future projects.

## ***Timber Harvest***

### ***Biomass / Fuelwood Harvests***

The Alaska Gateway School District is currently the only biomass user in the Tok Area. The Tok facility is operating; producing both heat and electricity and requires an estimated 2000 green tons of biomass chips a year. The Mentasta facility is heat only and requires 100 green tons per year. The FYSTS provides for this demand plus an anticipated demand by 2019 from a local densified wood log mill. In the past the majority of the Tok school demand was met with grant funded hazardous fuels reduction projects. As the school's system becomes more reliable and there is a better understanding of the costs and benefits it is increasingly important to provide a consistent wood supply to allow for responsible fiscal planning. These biomass harvests will be planned to occur on the landscape in a patch mosaic utilizing natural lines and limited viewsheds. These sales and associated roads are all within a few miles of Tok. Many of these roads are designed for all season, long term access for forest management and public use. The FLUPs will address details of harvest, roads and all other important considerations.

### ***Sawlog Harvests***

Demand for sawlog sales in the Tok area is currently limited to two contractors producing valued added products. Primary products are cabin logs, tongue and groove, and dimensional lumber. These sawlog harvests will be planned to occur on the landscape in a patch mosaic utilizing natural lines and limited viewsheds. These sales and associated roads are all within a few miles of Tok. Many of these roads are designed for all season, long term access for forest management and public use. The FLUPs will address details of harvest, roads and all other important considerations. Many harvest units along the Tok River had been previously reviewed under the sale number NC-837-T, Tok River Wildlife Habitat Timber Sale. As these units are harvested DOF will review the plan to ensure harvest design and transportation routes continue to be inline with the original FLUP.

## ***Sustained Yield***

The Alaska Land Act requires that state land be managed for sustained yield, which is "the achievement and maintenance in perpetuity of a high level of annual or regular periodic output of the various renewable resources of the state land consistent with multiple uses" (AS 38.04.910). The Timber Inventory of State Forest Lands in the Tanana Valley (Hanson, 2013) indicates that the annual sustained yield level for the Tok Management area with a forestry designation and typed as commercial timber stands is approximately 2,370 acres. Thus, the proposed average yearly harvest for this schedule, at 206.8 acres constitutes less than 9% of the sustained yield on Forest designated lands.

The proposed harvest on state lands with a Land Use Designation of Settlement with (209 Net Acres), are not part of and are not required to be a part of the Sustained Yield calculations.

Reforestation is completed through sale design which promotes natural seeding through adequate scarification techniques, seed trees, protection of existing saplings and pole timber during harvest operations, direct spot seeding, and if necessary planting of seedlings. Coppice regeneration with aspen is the expected and predominant first regeneration of most the sale areas. Sale areas, almost without exception, reforest to a mixed stand of white spruce, birch, aspen and poplar. Overstocking is as much of a concern as under-stocking. Reforestation progress is monitored year by year to ensure adequate stocking. Reforestation efforts have been successful in the Tok Area. There are no areas we are aware of that have not adequately regenerated. All details of regeneration will be covered in detail in the Preliminary Best Interest Finding (PBIF) and Forest Land Use Plan (FLUP) process.

The law, AS 41.17.220 – 230, requires Division of Forestry to develop a management plan for the Tanana Valley State Forest. The management plan guides many of the Division's management actions. The FYSTS is consistent with the guidelines and direction established in the TVSF Management Plan. Some of the sales may be for areas outside of the boundaries of the TVSF and are proposed on state owned forestry classified lands; these sales are consistent with the ETAP. Both the TVSF Management Plan and the ETAP are available for review at the Tok Area Office.

### ***Small Timber Sales***

The Division of Forestry may negotiate small timber sales (AS 38.05.115) and must comply with regulations for these small sales as established in 11 AAC 71.045. Smaller operators have expressed an interest in small sales that fit their production capacity needs and are within their economic range. The Tok Area DOF will layout small sales as ground conditions and sale economics allow.

### ***Schedule Review Process***

The Review Draft Five-Year Schedule of Timber Sales is submitted for review and comment to several State agencies. Comments about specific timber sales from Alaska Department of Fish and Game Habitat Division, Alaska Division of Mining, Land and Water, Alaska Department of Environmental Conservation and other agencies are used to draft a FLUP and PBIF for timber sales in years one and two (AS 38.05.112). The FLUP and PBIF gives site specific information for each sale describing the location, estimated timber volume, harvest methods, reforestation plan, access, and other potential uses of the sale area. Before any commercial timber sale of ten acres or larger is offered, DOF prepares a FLUP and PBIF and makes a finding that the sale is in the State's best interest. The schedule followed by individual FLUPs and PBIF is then distributed for review by the public. Public comments are considered, and revisions made as appropriate before the schedule is adopted. Sales where the FLUPs and PBIF have been previously reviewed by the public and agencies are noted on the schedule. Sales that have been reviewed and are currently available over the counter are also listed.

**Should you wish to comment on this schedule, you may drop off your written comments to Tok Area Forestry office or mail them to: Division of Forestry, P.O Box 10, Tok, AK 99780, or Fax them to (907) 883-5135. Electronic mail address: [nick.carter@alaska.gov](mailto:nick.carter@alaska.gov). For your comments to be considered, please respond with written comments received no later than by 4:30 PM Friday, July 19<sup>th</sup>, 2019.**

**Annual Sustained Yield**

<b>Management Unit</b>	<b>Acres</b>	<b>Cubic Foot / Board Foot Volumes</b>
Tok	2,370	3,299,068 / 7,384,826

**Annual Proposed Acres and Volume Green Standing Forest (No Salvage Harvest)** 209 Net Acres of harvest are within Settlement lands Land Use Designation and are not part of the Annual Sustained Yield Calculations

<b>Fiscal Year</b>	<b>Acres Sawlog</b>	<b>Acres Wood Energy</b>	<b>Board Feet Sawlog / Tons Wood Energy</b>
2019	103	131.5	365 MBF/4,195 tons
2020	23	227.3	212 MBF/6,380 tons
2021	156	100	576 MBF/2,940 tons
2022	102	109	1128 MBF/2,840 tons
2023	46	148	712 MBF/4,122 tons
<b>FIVE-YEAR TOTAL</b>	<b>430</b>	<b>716</b>	<b>2993 MBF/20,477 tons</b>

## **Sale Descriptions**

### **Fiscal Year 2019-23**

#### ***Biomass/Fuelwood Harvest Sales***

##### **Small Sales**

Small sales will be located throughout northeastern interior of Alaska. Five to ten small sales per year totaling approximately 500 cords of fuelwood/year will be offered. These sales are intended to provide small operators with timber to continue operating and producing heating resources for the local communities. The DOF intends to make this quantity and style of sale available for the duration of this planning document (2019- 2023).

There are 12 biomass/fuelwood sale offerings in the Tok Area. The sales total 772 acres and contain an estimated 19,500 tons or 12,745 cords (*conversions based on 36lbs/cubic foot green spruce and 85 cubic feet/cord*) and an additional 360 MBF of spruce sawlogs. These sales would require an estimated 6-12 miles of access development.

##### **Lookout Timber Sale South #1, 2**

Located south of Tok approximately 7 miles, these sales are comprised of 116 acres and contain an estimated volume of 3,100 tons requiring 3-4 miles of new access construction. New access would consist primarily of spur trails off the eagle trail lookout road.

##### **Lookout Timber Sale North #1**

Located south of Tok approximately 7 miles, this sale is comprised of 72 acres and contains an estimated volume of 2,000 tons requiring 2-3 miles of new access construction. New access would consist primarily of spur trails off the eagle trail lookout road.

##### **Tok Hazardous Fuels 1-5, 7, 8, and 10**

Located North and Northwest of Tok approximately 1-4 miles, these sales are comprised of 500 acres and contain an estimated volume of 12,100 tons requiring 1-2 miles of new access construction. New access would consist primarily of spur trails off the existing red fox trail. The main objective of these sales is community protection through hazardous fuel reduction. The hazardous fuels will be sold as biomass to provide energy/heat or densified wood products. Harvest Units 1,2, and 8 are on DNR land with a designation of Settlement and DOF will work in conjunction with the DNR Land Sales group regarding harvest unit layout and access design.

##### **Loran Station Sale**

Located east of Tok approximately 8 miles, this sale is comprised of 80 acres and contains an estimated volume of 12,100 tons requiring 1 mile of new access construction. New access would consist primarily of spur trails off the existing C Lake road and improvement of old fireline.

## Sawlog Sales

### *Small Sales*

Small sales will be located throughout northeastern interior of Alaska. 3-5 small sales per year totaling approximately 30 MBF/year will be offered. These sales are intended to provide small operators with timber to continue operating. The DOF intends to make this quantity and style of sale available for the duration of this planning document (2019-2023).

There are 8 sawlog sale offerings in the Tok Area. The sales total 430 acres and contain an estimated 2,752 MBF and an additional 900 tons of biomass/fuelwood. These sales would require approximately 10 miles of access development.

#### *Tok River Block A #1, 2, 3*

Located south of Tok approximately 12 miles, these sales are comprised of 142 acres and contain an estimated volume of 830 MBF of sawlogs and will not require any new road construction, though some improvements to the existing roads may be required.

#### *Lookout Timber Sale North #1, 2*

Located south of Tok approximately 7 miles, these sales are comprised of 50 acres and contain an estimated volume of 520 MBF and 55 tons of birch fuelwood requiring 3-4 miles of new access construction. New access would consist primarily of spur trails off the eagle trail lookout road.

#### *Tok Hazardous Fuels #6 and #9*

Located North and Northwest of Tok approximately 1-4 miles, these sales are comprised of 110 acres and contain an estimated volume of 977 MBF and 880 tons of fuelwood requiring 1 mile of new access construction. New access would consist primarily of spur trails off the existing red fox trail. Tok Hazardous Fuels #9 is located on DNR land with a designation of Settlement and DOF will work in conjunction with the DNR Land Sales group regarding harvest unit layout and access design.

#### *Johnson Slough Sawlog Sale*

Located West of Tok approximately 40 miles, this sale is comprised of 102 acres and contains an estimated volume of 1,128 MBF requiring improvement of approximately 4 miles of existing access and renewal of a previous ice bridge crossing at Johnson Slough.



Year 1 of 5  
July 1, 2018 to June 30, 2019

Year	Sale No.	Sale Name	Legal Description	Acres	Species	Volume	Area Plan	Management Unit	Remarks
1	NC-1161-T	Lookout Timber Sale South #1	Section 32, T17N, R12E	9.5	Spruce	11,900	TVSF	14	
					Spruce	3,800			
1	NC-1165-T	Tok River Block A #1	Section 11, T16N, R12E	25.8	Spruce	65,842	TVSF	14	Previously reviewed as NC-837-T
						0			
1	NC-1166-T	Tok River Block A #2	Sections 10, 15, T16N, R12E	65.0	Spruce	81,664	TVSF	14	Previously reviewed as NC-837-T
					Spruce	48,939			
1	NC-1169-T	Tok Hazardous Fuels #1	Section 11, T18N, R12E	74.6	Spruce	0	ETAP	U-22	Classified 'Settlement'
						87,600			
1	NC-1170-T	Tok Hazardous Fuels #2	Section 12, T18N, R21E	56.9	Spruce	0	ETAP	U-22	Classified 'Settlement'
						76,600			
5	# OF SALES		Total Acres	231.8	Sp Saw	159,406			
					Fiber	216,939			

TVSF means Tanana Valley State Forest

ETAP means Eastern Tanana Area Plan

All Sales are on State Land. All volumes are in cubic feet

Acree and volume amounts are rough estimates

{1} Previously Reviewed

{2} Forest Land use plan reviewed last year.

CF volume of Tanana Valley State Forest, Fairbanks block sales

CF volume of Tanana Valley State Forest, Kantishna block sales

CF volume of Tanana Valley State Forest, Delta block sales

CF volume of Tanana Valley State Forest, Tok block sales

CF volume of Yukon Tanana Area Plan sales

CF volume of Eastern Tanana Area Plan sales

	Spruce	Fiber
Sawlog	0	0
=	0	0
=	0	0
=	0	0
=	159,406	52,739
=	0	0
=	0	164,200

Year 2 of 5  
July 1, 2019 to June 30, 2020

Year	Sale No.	Sale Name	Legal Description	Acres	Species	Volume	Area Plan	Management Unit	Remarks
2	NC-1162-T	Tok River Block A #3	Section 15, T16N, R12E	9.1	Spruce	20,074 0	TVSF	14	Previously reviewed as NC-837-T
2	NC-1162-T	Tok River Block A #3	Section 15, T16N, R12E	13.8	Spruce	30,442 0	TVSF	14	Previously reviewed as NC-837-T
2	NC-1171-T	Tok Hazardous Fuels #3	Section 7, T18N, R12E	90.7	Spruce	0 97,100	ETAP	U-21	
2	NC-1172-T	Tok Hazardous Fuels #4	Section 8, T18N, R12E	56.7	Spruce	0 77,300	ETAP	U-21	
2	NC-1179-T	Loran Station Sale	Sections 18, 19, T18N, R14E	79.9	Spruce	0 123,200	ETAP	U-34	
5	# OF SALES		Total Acres	250.3	Sp Saw Fiber	50,516 297,600			

TVSF means Tanana Valley State Forest

ETAP means Eastern Tanana Area Plan

All Sales are on State Land. All volumes are in cubic feet  
Acreage and volume amounts are rough estimates

{1} Previously Reviewed

{2} Forest Land use plan reviewed last year.

CF volume of Tanana Valley State Forest, Fairbanks block sales

CF volume of Tanana Valley State Forest, Kantishna block sales

CF volume of Tanana Valley State Forest, Delta block sales

CF volume of Tanana Valley State Forest, Tok block sales

CF volume of Yukon Tanana Area Plan sales

CF volume of Eastern Tanana Area Plan sales

	Spruce	Sawlog	Fiber
=	0	0	0
=	0	0	0
=	0	0	0
=	50,516	0	0
	0	0	297,600

Year 3 of 5  
July 1, 2020 to June 30, 2021

Year	Sale No.	Sale Name	Legal Description	Acres	Species	Volume	Area Plan	Management Unit	Remarks
3	NC-1163-T	Oxbow Trail #1	Section 10, T16N, R12E	18.4	Spruce	0	TVSF	14	Previously reviewed as NC-837-T
3	NC-1168-T	Lookout Timber Sale South #2	Section 32, T17N, R12E	17.0	Spruce	44,000	TVSF	14	
3	NC-1173-T	Tok Hazardous Fuels #5	Sections 4, 5, 8, 9, T18N, R12E	76.7	Spruce	30,000	ETAP	U-21	
3	NC-1174-T	Tok Hazardous Fuels #6	Sections 4, 5, 8, 9, T18N, R12E	64.6	Spruce	63,200	ETAP	U-21	
4	# OF SALES		Total Acres	176.8	Sp Saw	137,200			
					Fiber	153,400			

TVSF means Tanana Valley State Forest

ETAP means Eastern Tanana Area Plan

All Sales are on State Land. All volumes are in cubic feet

Acreege and volume amounts are rough estimates

{1} Previously Reviewed

{2} Forest Land use plan reviewed last year.

CF volume of Tanana Valley State Forest, Fairbanks block sales

CF volume of Tanana Valley State Forest, Kantishna block sales

CF volume of Tanana Valley State Forest, Delta block sales

CF volume of Tanana Valley State Forest, Tok block sales

CF volume of Yukon Tanana Area Plan sales

CF volume of Eastern Tanana Area Plan sales

	Spruce	Sawlog	Fiber
=	0	0	0
=	0	0	0
=	0	0	0
=	44,000	28,000	0
=	0	0	0
=	93,200	125,400	

Year 4 of 5  
July 1, 2021 to June 30, 2022

Year	Sale No.	Sale Name	Legal Description	Acres	Species	Volume	Area Plan	Management Unit	Remarks
4	NC-1164-T	Tok River Block A #4	Section 15, T16N, R12E	10.1	Spruce	0	TVSF	14	Previously reviewed as NC-837-T
4	NC-1175-T	Tok Hazardous Fuels #7	Section 9, T18N, R12E	53.2	Spruce	75,000	ETAP	U-21	
4	NC-1176-T	Tok Hazardous Fuels #8	Sections 9, 10, T18N, R12E	50.3	Spruce	77,000	ETAP	U-22	Classified 'Settlement'
4	NC-1180-T	Johnson Slough Sawlog Sale	Sections 3, 4, 9, 10 T22N, R5E	102.2	Spruce	268,600			
4	# OF SALES		Total Acres	215.8	Sp Saw Fiber	268,600 167,000			

TVSF means Tanana Valley State Forest

ETAP means Eastern Tanana Area Plan

All Sales are on State Land. All volumes are in cubic feet

Acreage and volume amounts are rough estimates

{1} Previously Reviewed

{2} Forest Land use plan reviewed last year.

CF volume of Tanana Valley State Forest, Fairbanks block sales = 0

CF volume of Tanana Valley State Forest, Kantishna block sales = 0

CF volume of Tanana Valley State Forest, Delta block sales = 0

CF volume of Tanana Valley State Forest, Tok block sales = 268,600

CF volume of Yukon Tanana Area Plan sales = 0

CF volume of Eastern Tanana Area Plan sales = 152,000

	Spruce	Sawlog	Fiber
Total Acres	215.8		
Sp Saw	268,600		
Fiber			167,000

Year 5 of 5  
July 1, 2022 to June 30, 2023

Year	Sale No.	Sale Name	Legal Description	Acres	Species	Volume	Area Plan	Management Unit	Remarks
5	NC-1167-T	Lookout Timber Sale North #1	Sections 21, 28, T17N, R12E	72.4		0	TVSF	14	
5	NC-1177-T	Tok Hazardous Fuels #9	Sections 10, 11, T18N, R12E	46.6	Spruce	111,400	ETAP	U-22	Classified 'Settlement'
5	NC-1178-T	Tok Hazardous Fuels #10	Sections 13, 14, 24, T18N, R11E	63.8	Spruce	98,500	ETAP	U-21	
5	NC-1181-T	Lookout Timber Sale North #2	Section 28, T17N, R12E	12.4	Spruce	19,100	TVSF	14	
4	# OF SALES		Total Acres	195.2	Sp Saw	169,500			
					Fiber	229,000			

TVSF means Tanana Valley State Forest

ETAP means Eastern Tanana Area Plan

All Sales are on State Land. All volumes are in cubic feet

Acres and volume amounts are rough estimates

{1} Previously Reviewed

{2} Forest Land use plan reviewed last year.

CF volume of Tanana Valley State Forest, Fairbanks block sales

CF volume of Tanana Valley State Forest, Kantishna block sales

CF volume of Tanana Valley State Forest, Delta block sales

CF volume of Tanana Valley State Forest, Tok block sales

CF volume of Yukon Tanana Area Plan sales

CF volume of Eastern Tanana Area Plan sales

	Spruce	Sawlog	Fiber
=	0	0	0
=	0	0	0
=	0	0	0
=	0	0	130,500
	0	0	0
	169,500		98,500

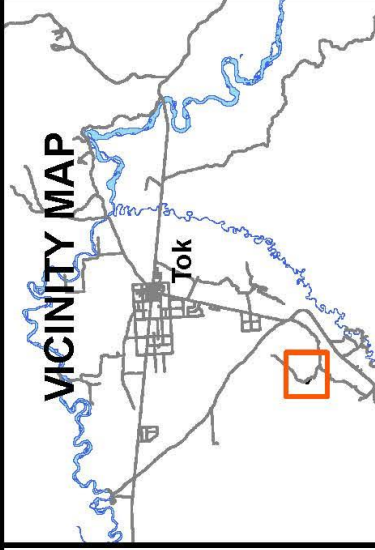
	Sawlog CF	Sawlog BF	Fiber CF	Acres	Sales
<b>Total for year 1</b>					
CF volume of Tanana Valley State Forest, Tok Block Sales	= 159,406	669,505	52,739		
CF volume of Eastern Tanana Area Plan Sales	= 0	0	164,200		
<b>Total all plans and blocks for year</b>	= 159,406	669,505	216,939	231.8	5.0
<b>Total for year 2</b>					
CF volume of Tanana Valley State Forest, Tok Block Sales	= 50,516	212,167	0		
CF volume of Eastern Tanana Area Plan Sales	= 0	0	297,600		
<b>Total all plans and blocks for year</b>	= 50,516	212,167	297,600	250.3	5.0
<b>Total for year 3</b>					
CF volume of Tanana Valley State Forest, Tok Block Sales	= 44,000	184,800	28,000		
CF volume of Eastern Tanana Area Plan Sales	= 93,200	391,440	125,400		
<b>Total all plans and blocks for year</b>	= 137,200	576,240	153,400	176.8	4.0
<b>Total for year 4</b>					
CF volume of Tanana Valley State Forest, Tok Block Sales	= 268,600	1,128,120	15,000		
CF volume of Eastern Tanana Area Plan Sales	= 0	0	152,000		
<b>Total all plans and blocks for year</b>	= 268,600	1,128,120	167,000	215.8	4.0
<b>Total for year 5</b>					
CF volume of Tanana Valley State Forest, Tok Block Sales	= 0	0	130,500		
CF volume of Eastern Tanana Area Plan Sales	= 169,500	711,900	98,500		
<b>Total all plans and blocks for year</b>	= 169,500	711,900	229,000	195.2	4.0
<b>Five Year Total</b>	785,222	3,297,932	1,063,939	1,069.8	22
<b>Average per year</b>	157,044	659,586	212,788	214.0	4.4

***YEAR ONE DETAILED MAPS***

# STATE OF ALASKA

Department of Natural Resources  
Division of Forestry  
NC-1161-T  
Lookout Timber Sale South #1  
Section 32  
T17N, R12E C.R.M.

## VICINITY MAP

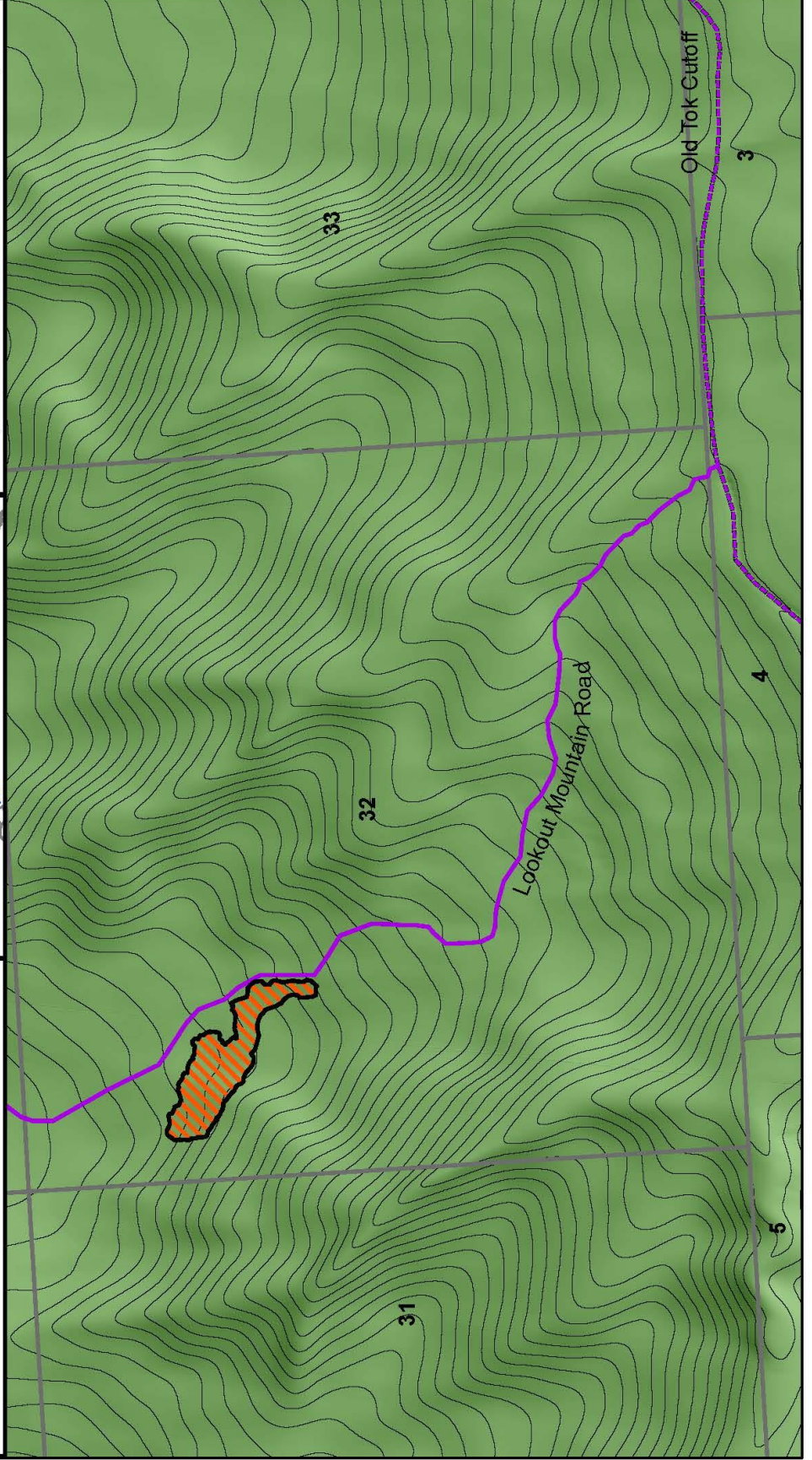


## Legend

- Timber harvest Area
- Highway
- Forest Primary
- Forest Secondary
- Forest Spur
- Minor Road
- Proposed Road



0 0.125 0.25 0.5 Miles





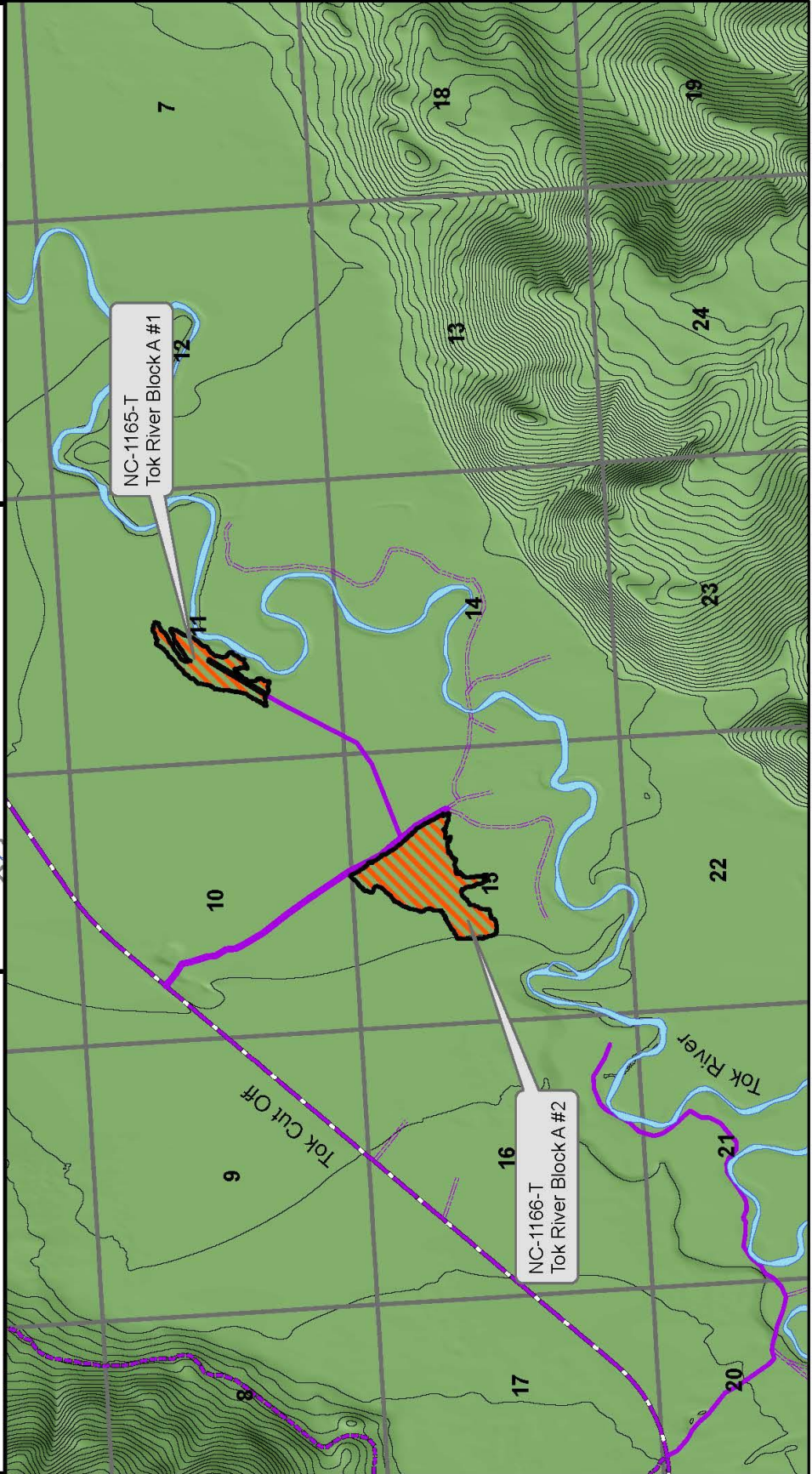
**STATE OF ALASKA**  
 Department of Natural Resources  
 Division of Forestry  
 NC-1165-T, NC-1166-T  
 Tok River Block A #1 and #2  
 Sections 10, 11, 15  
 T16N, R12E C.R.M.

**VICINITY MAP**

**Legend**

- Timber harvest Area
- Highway
- Forest Primary
- Forest Secondary
- Forest Spur
- Minor Road
- Proposed Road

0 0.25 0.5 1 Miles



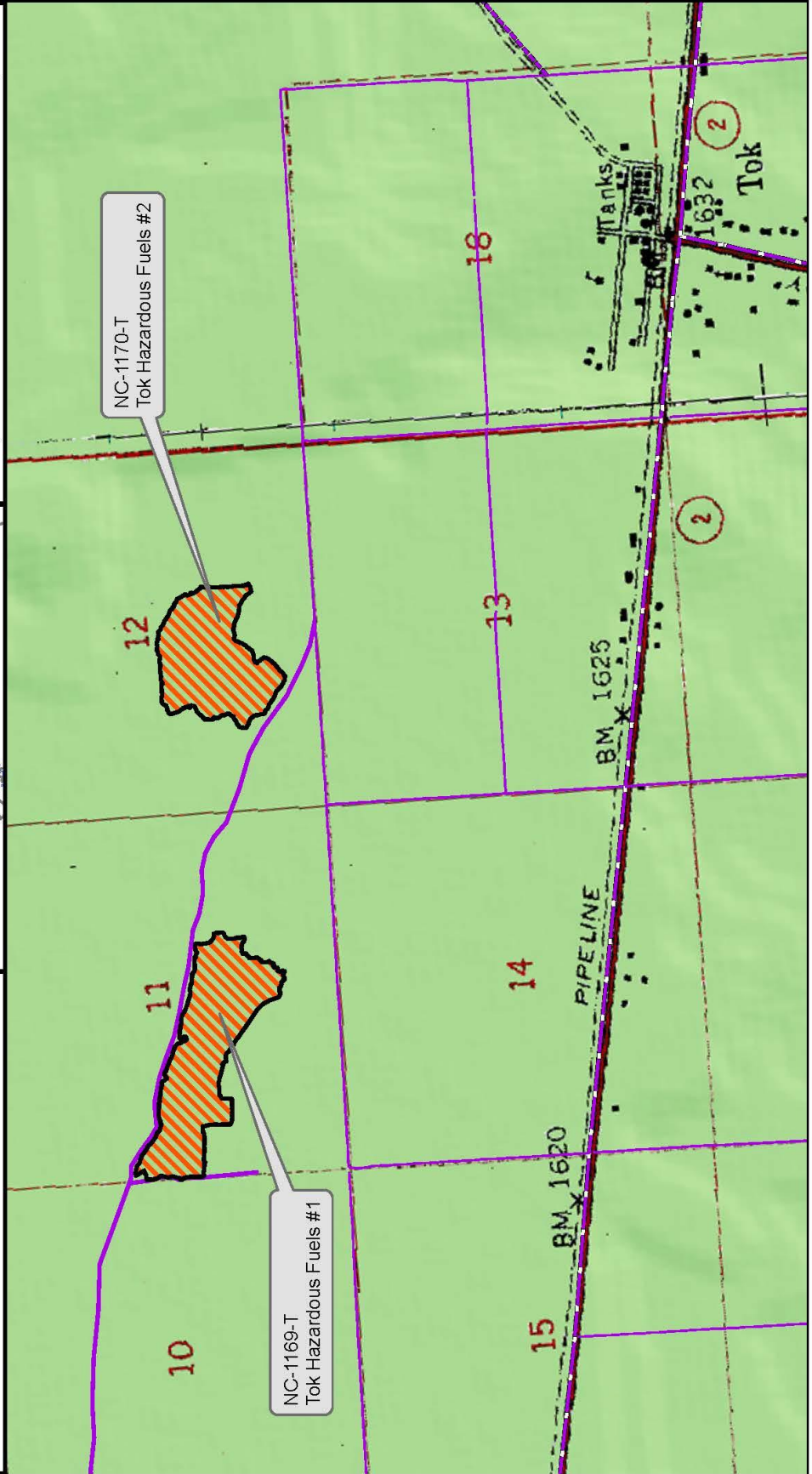
**STATE OF ALASKA**  
 Department of Natural Resources  
 Division of Forestry  
 NC-1169-T, NC-1170-T  
 Tok Hazardous Fuels #1 and #2  
 Sections 11, 12  
 T18N, R12E C.R.M.

**VICINITY MAP**

**Legend**

- Timber harvest Area
- Forest Primary
- Forest Secondary
- Forest Spur
- Highway
- Major
- Minor Road
- Proposed Road

0 0.25 0.5 1 Miles



***YEAR TWO DETAILED MAPS***

# STATE OF ALASKA

Department of Natural Resources  
Division of Forestry  
NC-1162-T  
Tok River Block A #3  
Section 15  
T16N, R12E C.R.M.

## VICINITY MAP



## Legend

- Timber harvest Area
- Highway
- Forest Primary
- Forest Secondary
- Forest Spur
- Minor Road
- Proposed Road

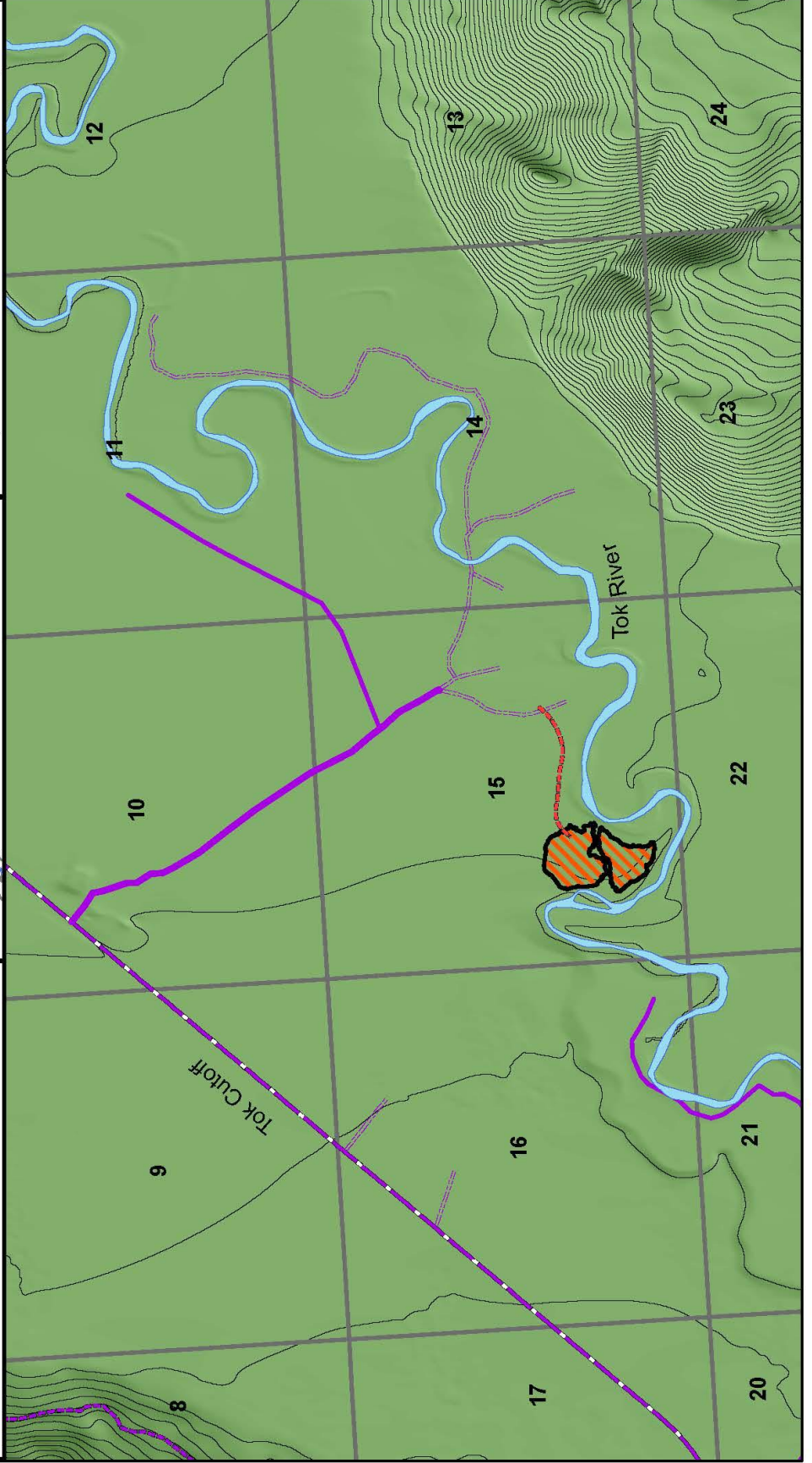


1 Miles

0.5

0.25

0



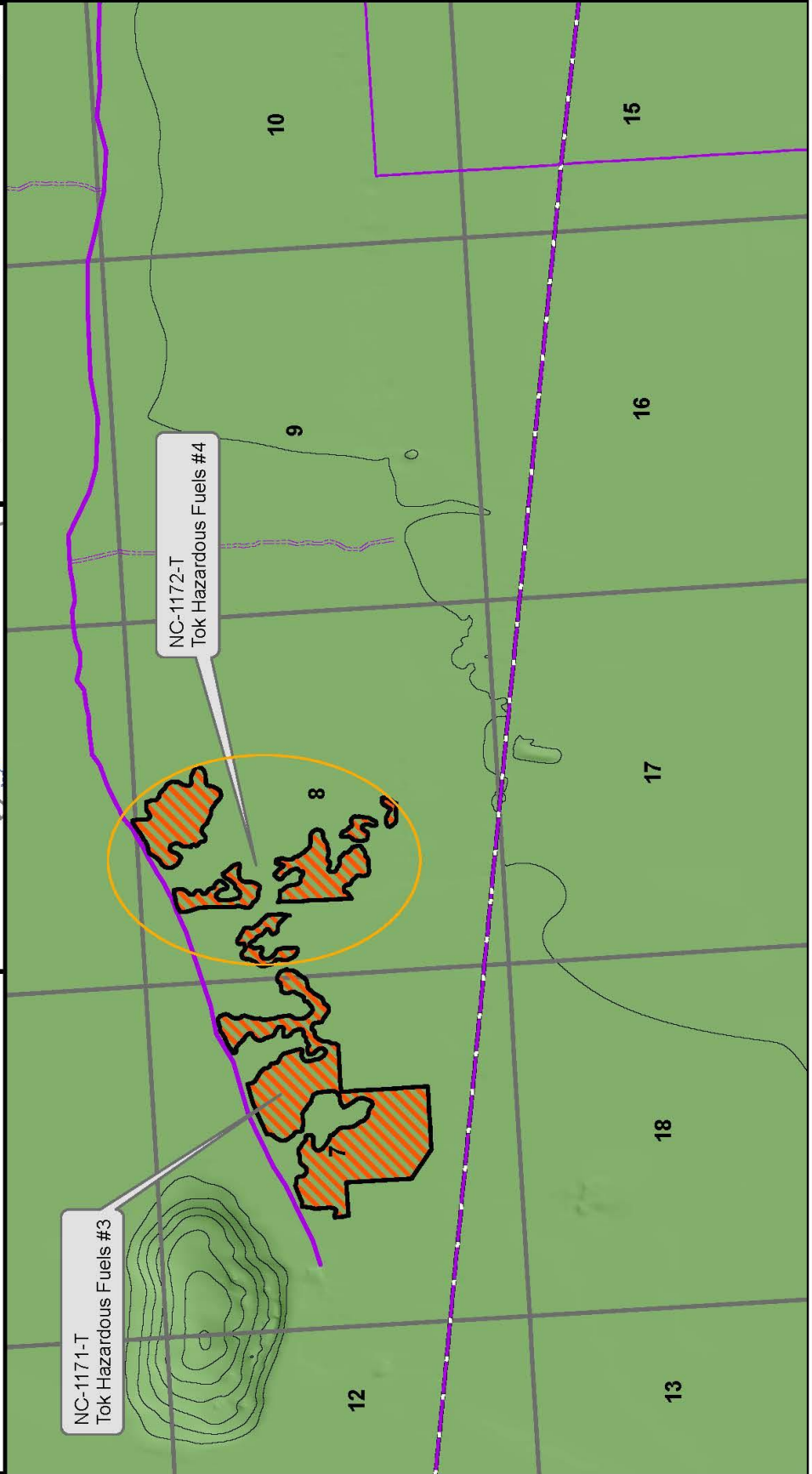
**STATE OF ALASKA**  
 Department of Natural Resources  
 Division of Forestry  
 NC-1171-T, NC-1172-T  
 Tok Hazardous Fuels #3 and #4  
 Sections 7, 8  
 T18N, R12E C.R.M.

**VICINITY MAP**

**Legend**

- Timber harvest Area
- Forest Primary
- Forest Secondary
- Forest Spur
- Highway
- Major
- Minor Road
- Proposed Road

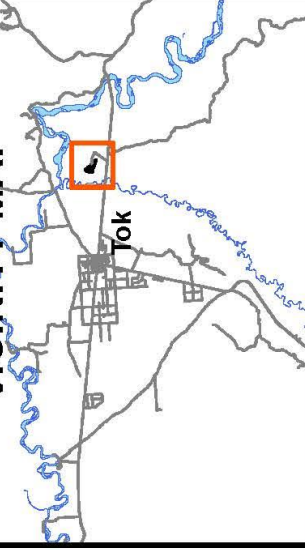
0 0.25 0.5 1 Miles



# STATE OF ALASKA

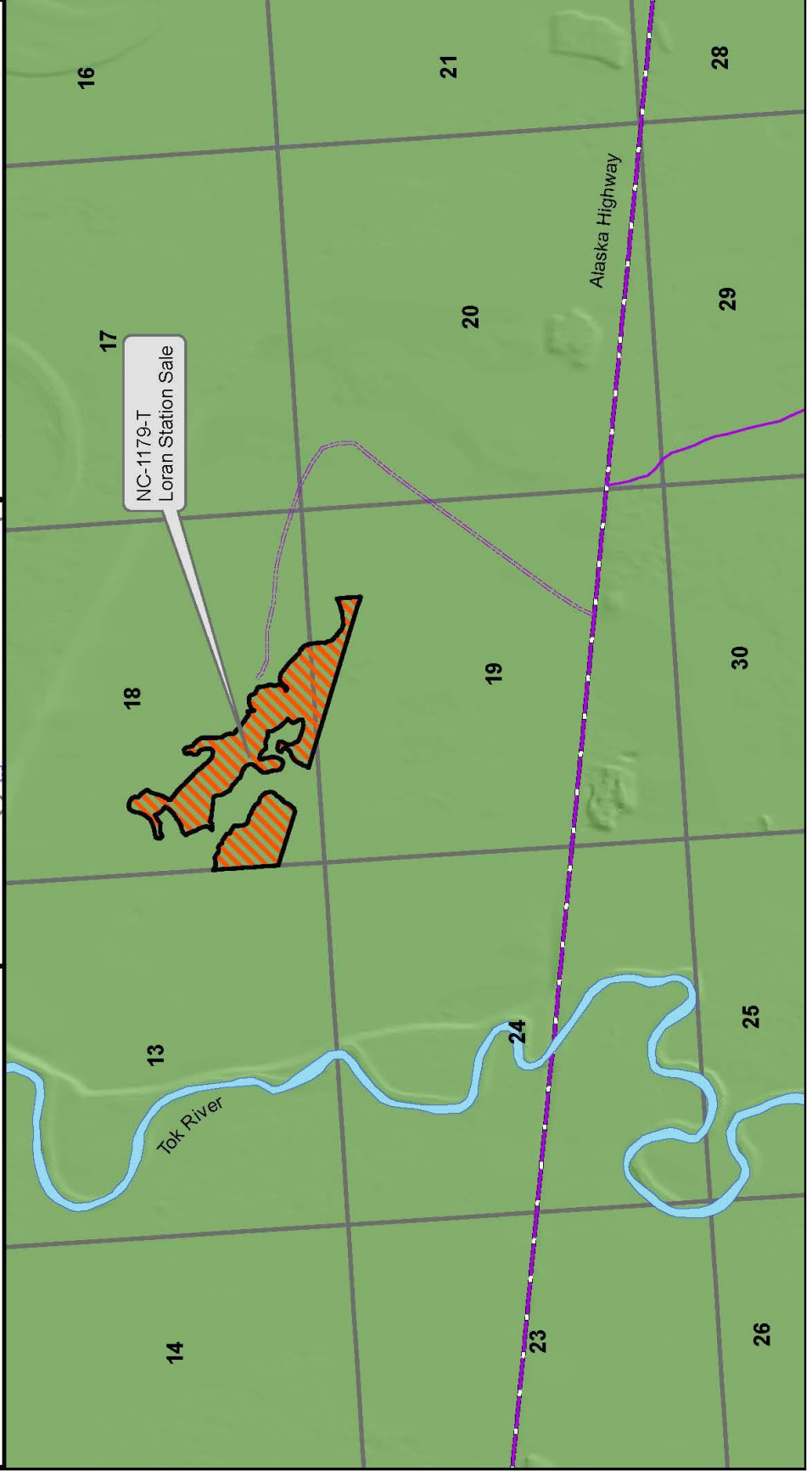
Department of Natural Resources  
Division of Forestry  
NC-1179-T  
Loran Station Sale  
Sections 18, 19  
T18N, R14E C.R.M.

## VICINITY MAP

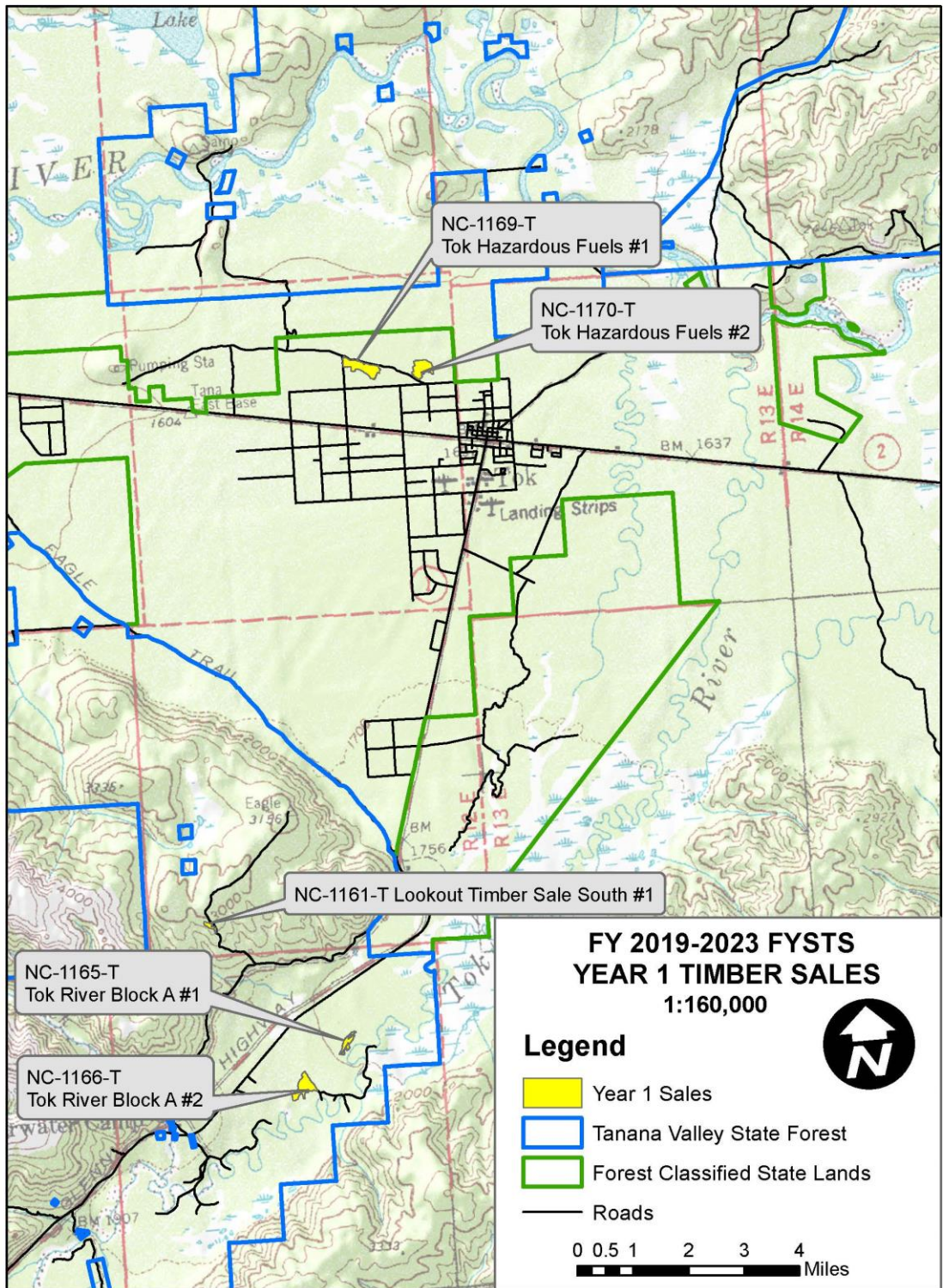


## Legend

- Timber harvest Area
- Forest Primary
- Forest Secondary
- Forest Spur
- Highway
- Major
- Minor Road
- Proposed Road



***YEARS 1-5 VICINITY MAPS***



IVER

NC-1169-T  
Tok Hazardous Fuels #1

NC-1170-T  
Tok Hazardous Fuels #2

NC-1161-T Lookout Timber Sale South #1

NC-1165-T  
Tok River Block A #1

NC-1166-T  
Tok River Block A #2

**FY 2019-2023 FYSTS  
YEAR 1 TIMBER SALES  
1:160,000**

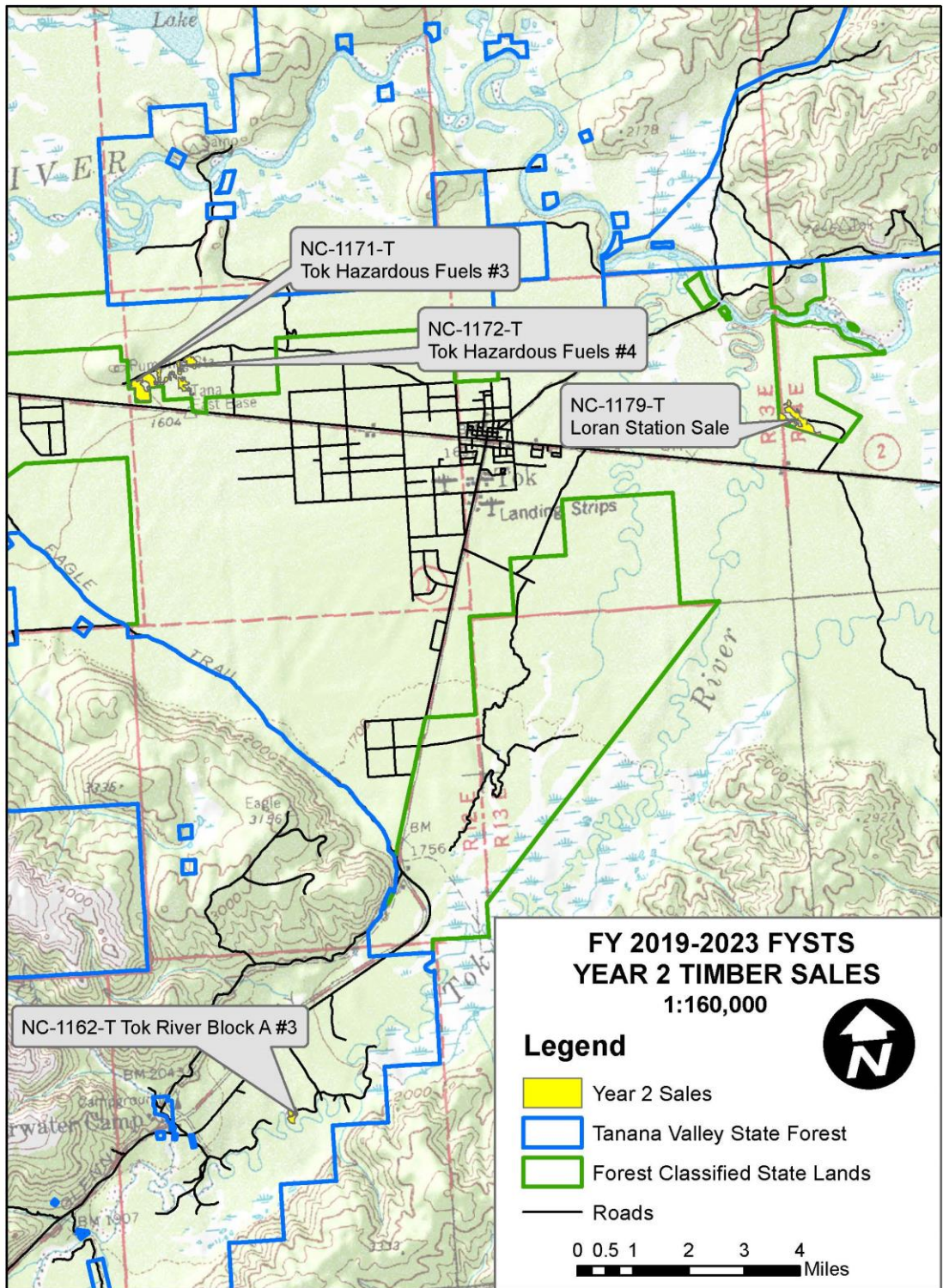
**Legend**

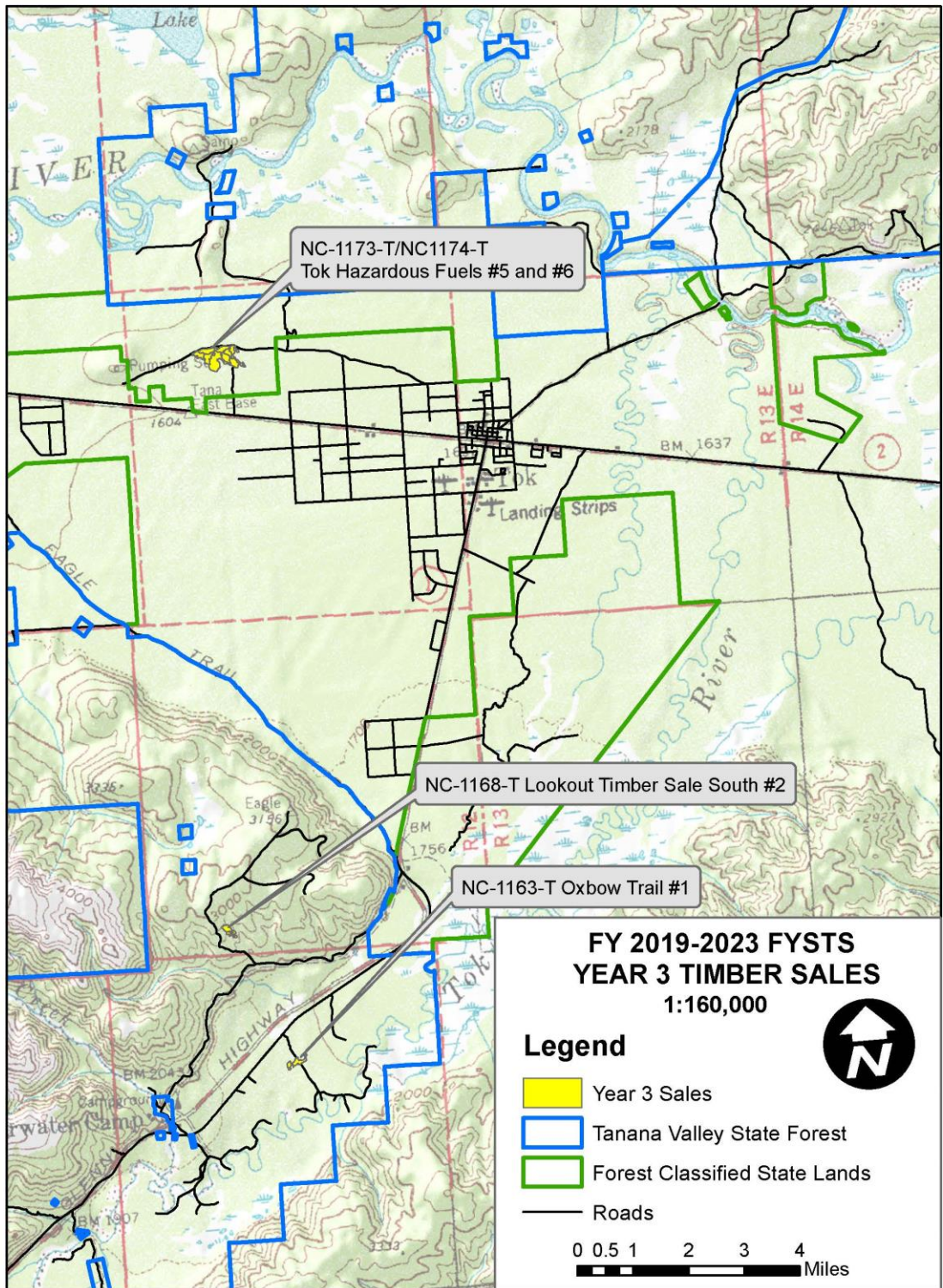
- Year 1 Sales
- Tanana Valley State Forest
- Forest Classified State Lands
- Roads

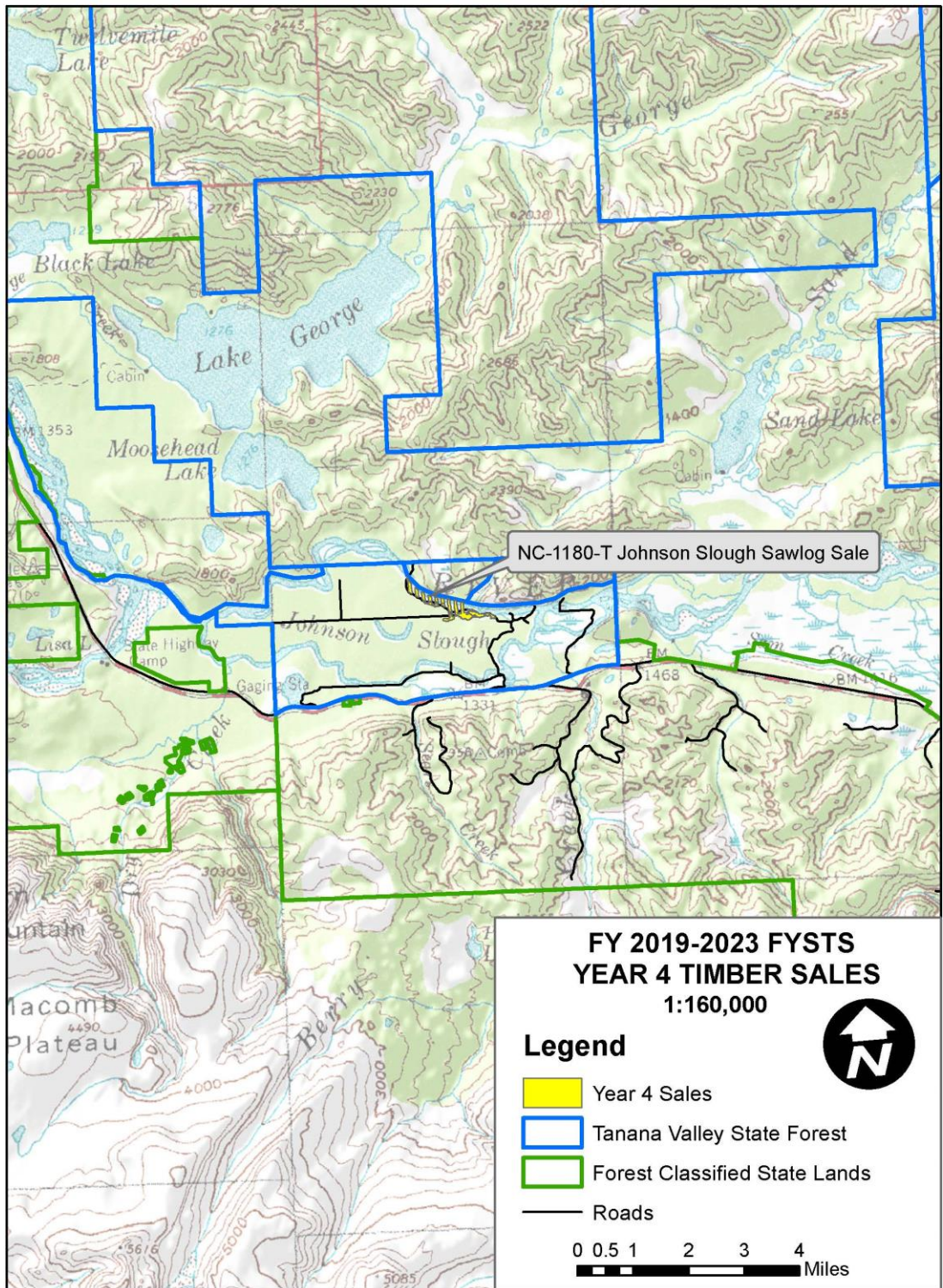
0 0.5 1 2 3 4 Miles

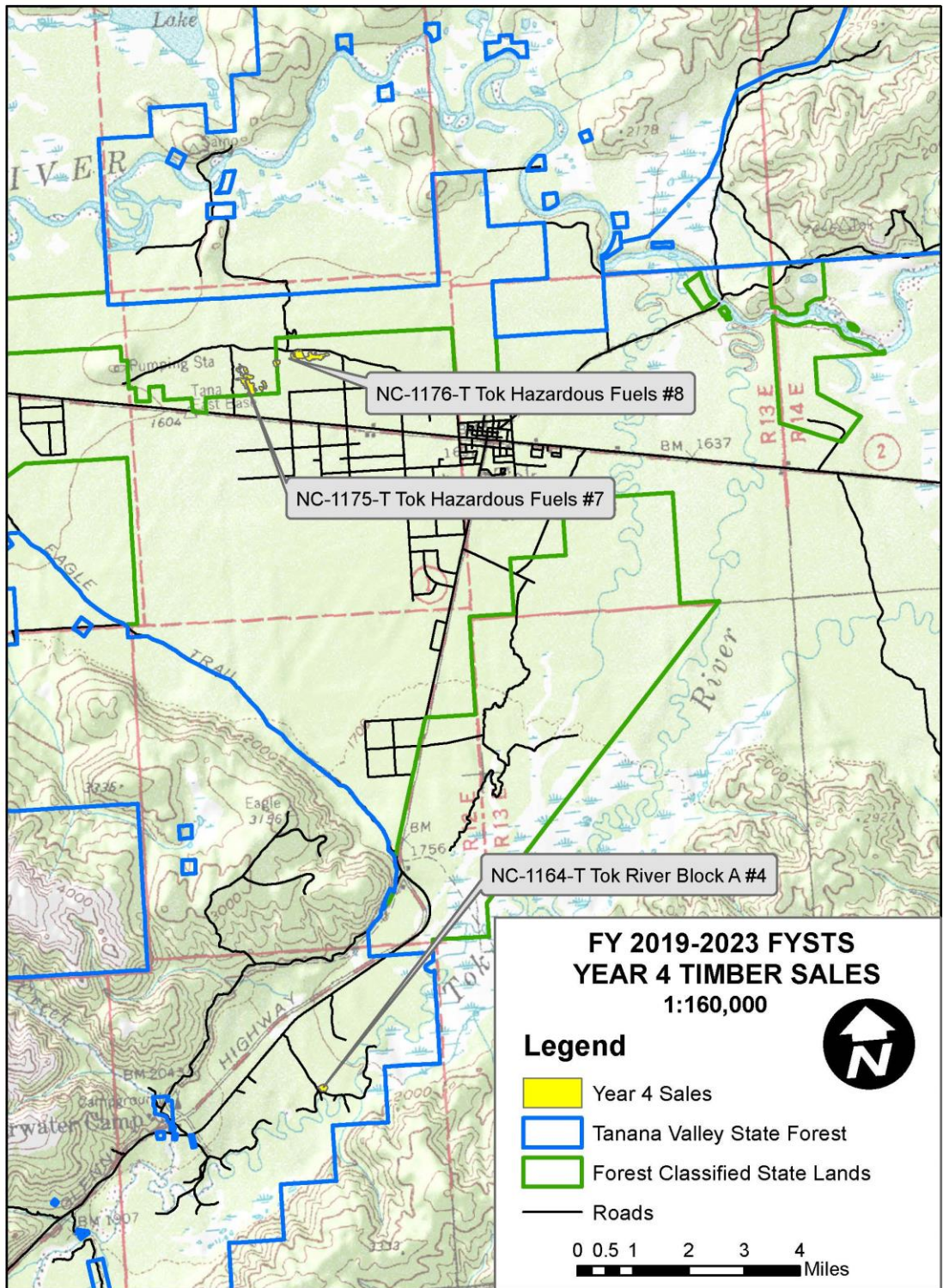


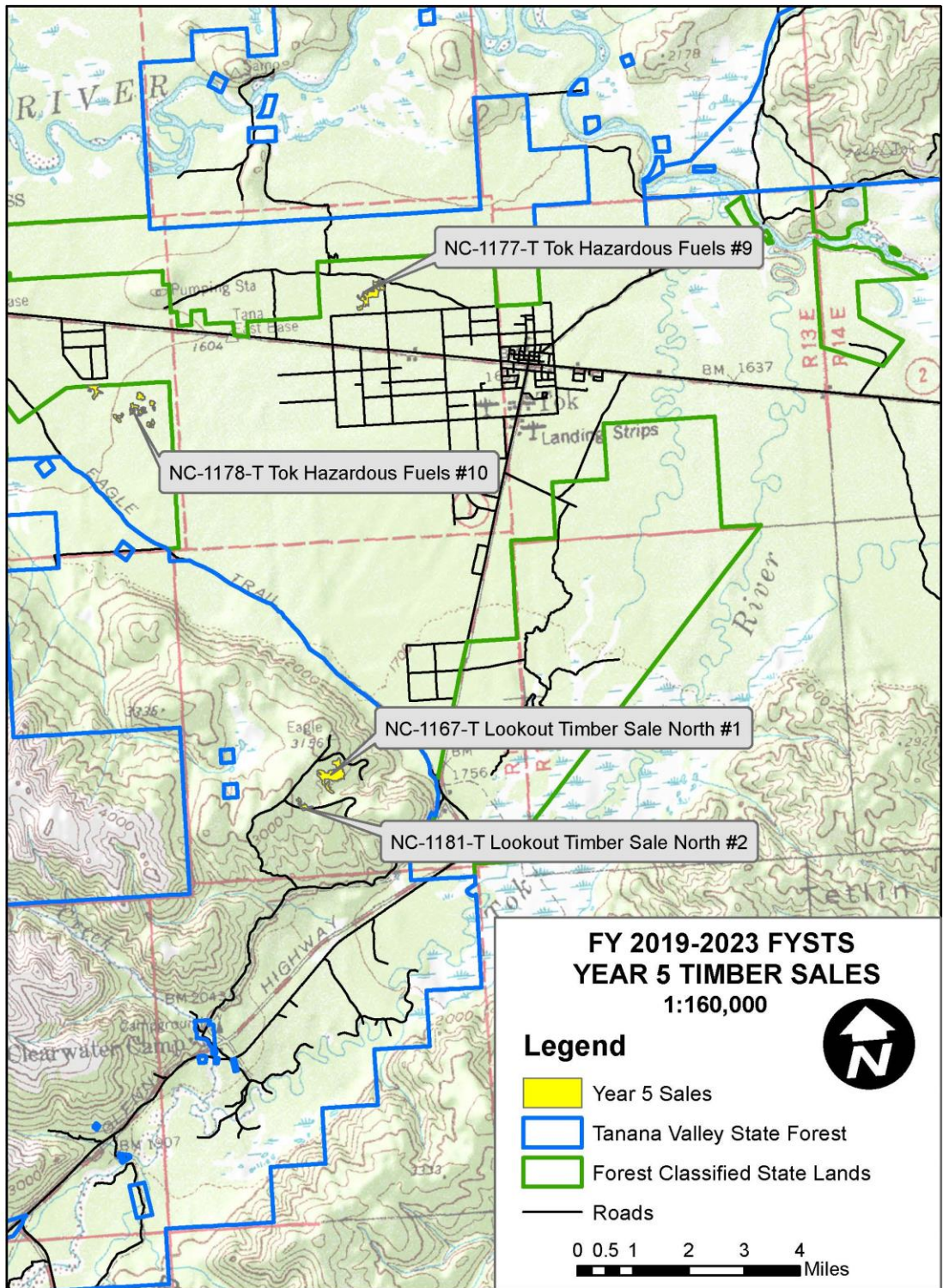












**FY 2019-2023 FYSTS  
YEAR 5 TIMBER SALES  
1:160,000**

**Legend**

- Year 5 Sales
- Tanana Valley State Forest
- Forest Classified State Lands
- Roads

